



24 METRE FAST FERRY CATAMARAN



PERULPA

Principal Particulars

Design	Pacific High Seas Design
Length (overall)	23.95 m
Length (waterline)	25.80 m
Beam (overall)	6.24 m
Hull Draft	0.80 m

Capacities

Passengers and Crew	150
Crew	2
Fuel	2 x 1000 L

Technical

Main Engines	2 x Scania Di 1259M diesel engines each rated 331 kW @ 100% MCR
Gearboxes	Twin Disc MG 51 I4 SC
Water jets	Twin Hamilton HJ 364 57 KW Blue Arrow

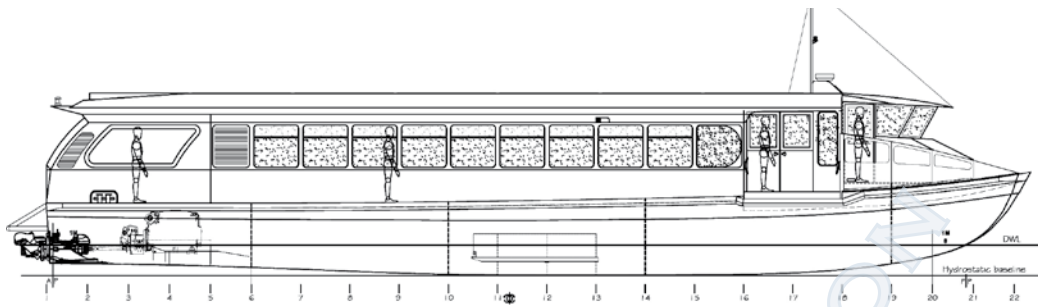
Speed

Maximum	29 knots
Service	22 knots

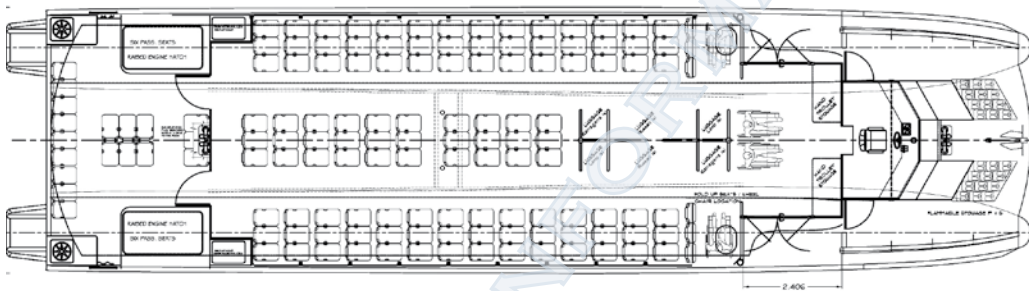
Classification

Uniform Shipping Laws (USL) IE

BITS - PERULPA

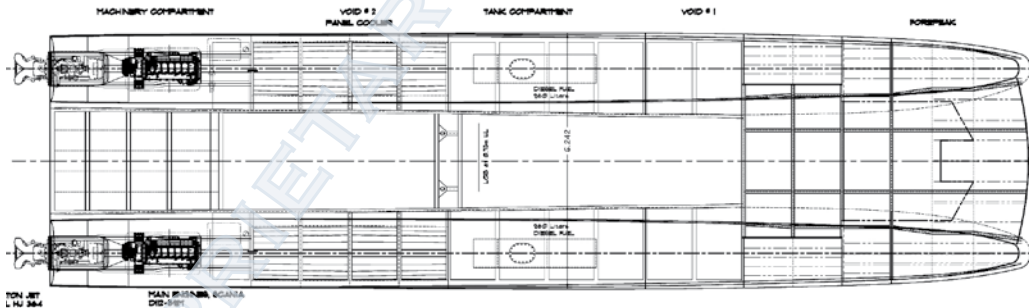


PROFILE VIEW



CENTRELINE PROFILE

TOTAL SEATING PROVIDED = 150 SEATS + 4 WHEELCHAIR POSITIONS (154 TOTAL SEATED)
 RESIDUAL AREA FOR STANDING PASSENGERS GREATER THAN 22 INCH 43 INCH
 PROVIDING FOR 40 STANDING PASSENGERS AT 0.50 m² m² PASSENGER
 FOR LOADING DURATION BETWEEN 12 & 30 MINUTES, 75% OCCUPANCY (41 SEATS)
 TOTAL COMPLIMENT, MAXIMUM = 200 PASSENGERS PLUS TWO CREW



BELOW DECK

PACIFIC HIGHSEAS DESIGN
 Naval Architects & Marine Consultants
 Queensland accredited ship designers, # 332

DESTINATION
 REDLAND BAY

CLIENT
 BAY ISLAND
 TRANSIT
 FERRIES

DELIVERED
 2009

45 BARKU COURT | HEMMANT QLD 4174 AUSTRALIA | PH +61 7 3393 6909 | WWW.ALLYBOATS.COM.AU
 FAX +61 7 3393 4620 | PO BOX 8078 | WYNNUM NORTH QLD 4178

BUILDERS OF QUALITY ALUMINIUM CRAFT, SPECIALISING IN PRIVATE AND COMMERCIAL VESSELS